

NOTES:

THIS PROPERTY IS NOT LOCATED IN A SPECIAL FLOOD HAZARD AREA AS DETERMINED BY FEDERAL EMERGENCY MANAGEMENT AGENCY.
 FIRM FLOOD INSURANCE RATE MAP NO. 37021C0350 C EFFECTIVE DATE: MAY 6, 1996

PROPERTY SUBJECT TO ALL RIGHTS-OF-WAY AND EASEMENTS OF RECORD, INCLUDING, BUT NOT LIMITED TO, THOSE SHOWN HEREON.

AREA BY COORDINATE COMPUTATIONS.

ALL DISTANCES SHOWN ARE HORIZONTAL GROUND DISTANCES UNLESS OTHERWISE NOTED.

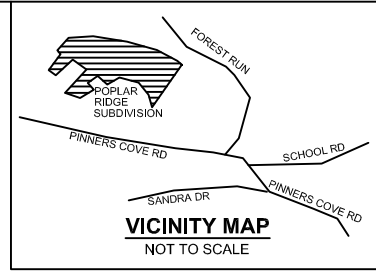
BUILDING SETBACK REQUIREMENTS:
 FRONT - 50' FROM RIGHT-OF-WAY
 SIDE - 15' REAR - 25'

LOT 126
 PIN: 9666-18-40-4166
 POPLAR RIDGE, LLC.
 DB 3913 PG 629

CONTOUR INTERVAL = 5'

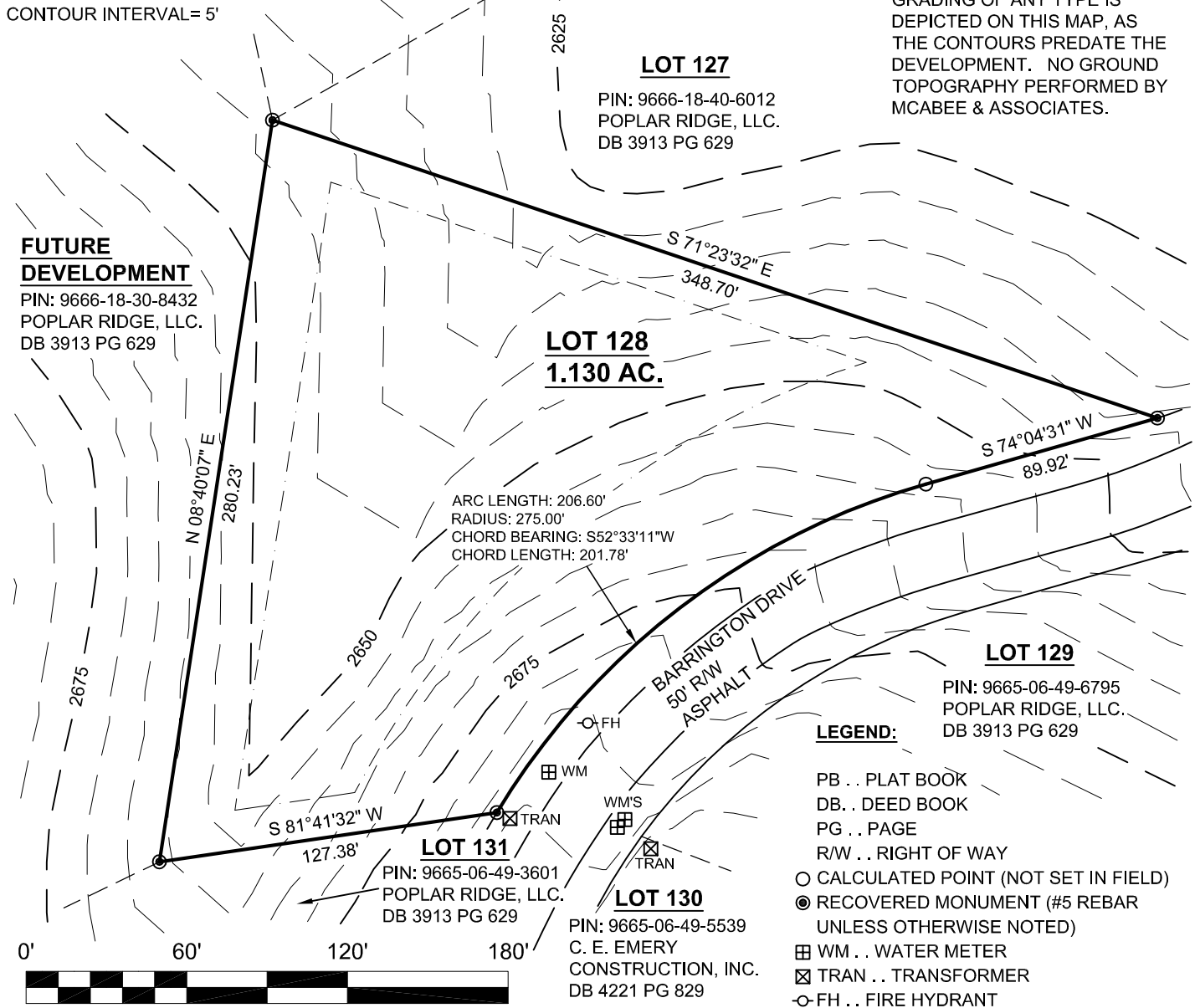
PB 102 PG 90

NORTH



THIS MAP TO BE USED FOR SALES PURPOSES ONLY.

THE TOPOGRAPHIC CONTOURS PRESENTED ON THIS MAP WERE OBTAINED FROM THE SITE PLAN. NO CONSTRUCTION GRADING OF ANY TYPE IS DEPICTED ON THIS MAP, AS THE CONTOURS PREDATE THE DEVELOPMENT. NO GROUND TOPOGRAPHY PERFORMED BY MCABEE & ASSOCIATES.



FUTURE DEVELOPMENT
 PIN: 9666-18-30-8432
 POPLAR RIDGE, LLC.
 DB 3913 PG 629

LOT 128
1.130 AC.

LOT 129
 PIN: 9665-06-49-6795
 POPLAR RIDGE, LLC.
 DB 3913 PG 629

LEGEND:

- PB .. PLAT BOOK
- DB .. DEED BOOK
- PG .. PAGE
- R/W .. RIGHT OF WAY
- CALCULATED POINT (NOT SET IN FIELD)
- RECOVERED MONUMENT (#5 REBAR UNLESS OTHERWISE NOTED)
- ⊕ WM .. WATER METER
- ⊠ TRAN .. TRANSFORMER
- FH .. FIRE HYDRANT



McAbee & Associates, PA
 Professional Land Surveyors

Wallace S. McAbee, PLS Telephone (828) 628-1295
 Eric S. McAbee, PLS Fax (828) 628-1294

3 McAbee Trail Fairview North Carolina, 28730

LOT # 128

POPLAR RIDGE SUBDIVISION

PIN: 9665-06-49-4898 LIMESTONE TOWNSHIP
 DB 3913 PG 629 BUNCOMBE COUNTY,
 PB 102 PG 90 NORTH CAROLINA

DATE: 7/20/07
 PROJECT NO.: 10184
 DRAWN BY: VKW
 DRAWING NO.: A-07-627

SCALE: 1" = 60'