

NOTES:

THIS PROPERTY IS NOT LOCATED IN A SPECIAL FLOOD HAZARD AREA AS DETERMINED BY FEDERAL EMERGENCY MANAGEMENT AGENCY.
 FIRM FLOOD INSURANCE RATE MAP NO. 37021C0350 C EFFECTIVE DATE: MAY 6, 1996

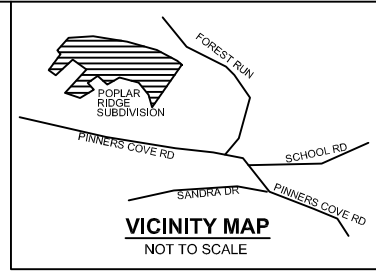
PROPERTY SUBJECT TO ALL RIGHTS-OF-WAY AND EASEMENTS OF RECORD, INCLUDING, BUT NOT LIMITED TO, THOSE SHOWN HEREON.

AREA BY COORDINATE COMPUTATIONS.

ALL DISTANCES SHOWN ARE HORIZONTAL GROUND DISTANCES UNLESS OTHERWISE NOTED.

BUILDING SETBACK REQUIREMENTS:
 FRONT - 50' FROM RIGHT-OF-WAY
 SIDE - 15' REAR - 25'

CONTOUR INTERVAL = 5'



LOT 124
 PIN 9666-18-40-1416
 COVES DEVELOPMENT GROUP, LLC.
 DB 4242 PG 747

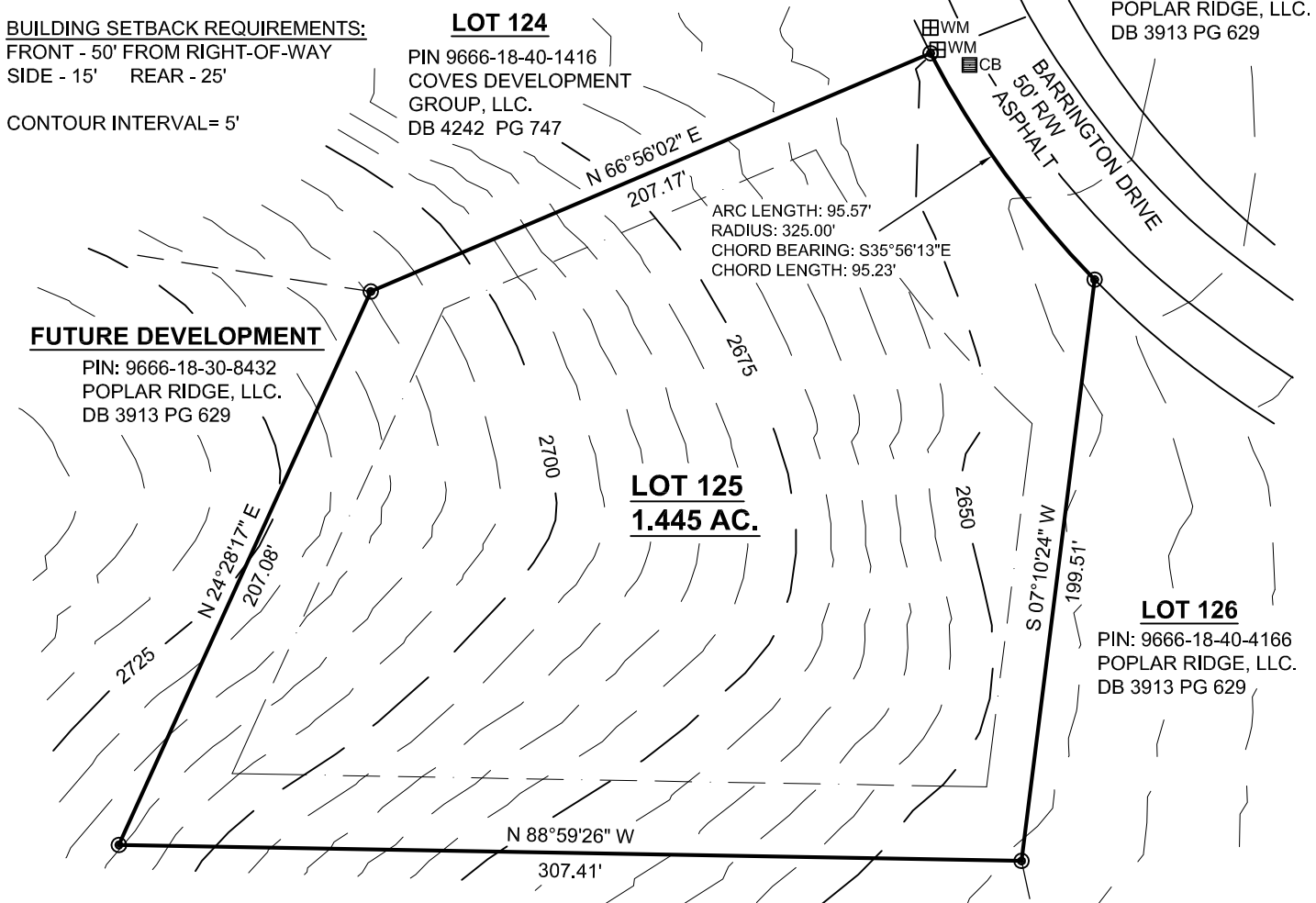
LOT 112
 PIN: 9666-18-40-5409
 POPLAR RIDGE, LLC.
 DB 3913 PG 629

FUTURE DEVELOPMENT

PIN: 9666-18-30-8432
 POPLAR RIDGE, LLC.
 DB 3913 PG 629

LOT 125
1.445 AC.

LOT 126
 PIN: 9666-18-40-4166
 POPLAR RIDGE, LLC.
 DB 3913 PG 629



LEGEND:

- PB . . PLAT BOOK
- DB . . DEED BOOK
- PG . . PAGE
- R/W . . RIGHT OF WAY
- CALCULATED POINT (NOT SET IN FIELD)
- RECOVERED MONUMENT (#5 REBAR UNLESS OTHERWISE NOTED)
- WM . . WATER METER
- CB . . CATCH BASIN

THIS MAP TO BE USED FOR SALES PURPOSES ONLY.

THE TOPOGRAPHIC CONTOURS PRESENTED ON THIS MAP WERE OBTAINED FROM THE SITE PLAN AND FROM A ROADWAY TOPOGRAPHY PERFORMED BY MCABEE & ASSOCIATES.



McAbee & Associates, PA
 Professional Land Surveyors

Wallace S. McAbee, PLS Telephone (828) 628-1295
 Eric S. McAbee, PLS Fax (828) 628-1294

3 McAbee Trail Fairview North Carolina, 28730

LOT # 125

POPLAR RIDGE SUBDIVISION

PIN: 9666-18-40-2245 LIMESTONE TOWNSHIP
 DB 3913 PG 629 BUNCOMBE COUNTY,
 PB 102 PG 90 NORTH CAROLINA

DATE:: 7/20/07
 PROJECT NO.: 10184
 DRAWN BY: VKW
 DRAWING NO.: A-07-624

SCALE: 1" = 60'