

**NOTES:**

THIS PROPERTY IS NOT LOCATED IN A SPECIAL FLOOD HAZARD AREA AS DETERMINED BY FEDERAL EMERGENCY MANAGEMENT AGENCY. FIRM FLOOD INSURANCE RATE MAP NO. 37021C0350 C EFFECTIVE DATE: MAY 6, 1996

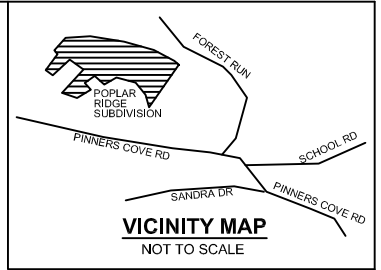
PROPERTY SUBJECT TO ALL RIGHTS-OF-WAY AND EASEMENTS OF RECORD, INCLUDING, BUT NOT LIMITED TO, THOSE SHOWN HEREON.

AREA BY COORDINATE COMPUTATIONS.

ALL DISTANCES SHOWN ARE HORIZONTAL GROUND DISTANCES UNLESS OTHERWISE NOTED.

**BUILDING SETBACK REQUIREMENTS:**  
 FRONT - 50' FROM RIGHT-OF-WAY  
 SIDE - 15' REAR - 25'

CONTOUR INTERVAL= 5'



PIN: 9666-18-40-6743  
 PATSY H. SILVERS  
 DB 4394 PG 939  
 PB 55 PG 126

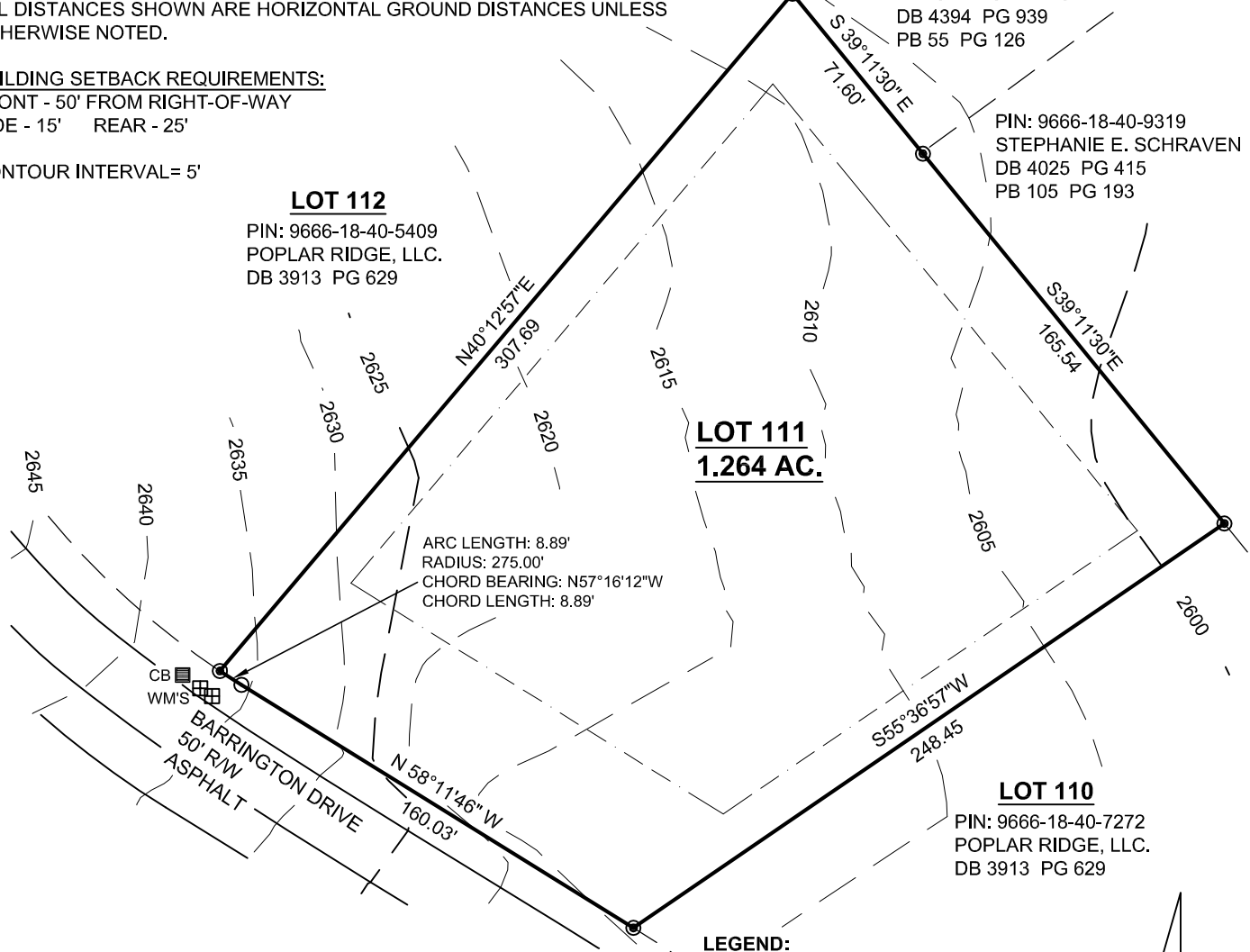
PIN: 9666-18-40-9319  
 STEPHANIE E. SCHRAVEN  
 DB 4025 PG 415  
 PB 105 PG 193

**LOT 112**  
 PIN: 9666-18-40-5409  
 POPLAR RIDGE, LLC.  
 DB 3913 PG 629

**LOT 111**  
**1.264 AC.**

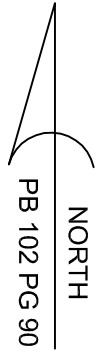
ARC LENGTH: 8.89'  
 RADIUS: 275.00'  
 CHORD BEARING: N57°16'12"W  
 CHORD LENGTH: 8.89'

**LOT 110**  
 PIN: 9666-18-40-7272  
 POPLAR RIDGE, LLC.  
 DB 3913 PG 629



**LEGEND:**

- PB . . PLAT BOOK
- DB . . DEED BOOK PG . . PAGE
- R/W . . RIGHT OF WAY
- CALCULATED POINT (NOT SET IN FIELD)
- RECOVERED MONUMENT (#5 REBAR UNLESS OTHERWISE NOTED)
- ⊠ WM . . WATER METER
- CB . . CATCH BASIN



THIS MAP TO BE USED FOR SALES PURPOSES ONLY.

THE TOPOGRAPHIC CONTOURS PRESENTED ON THIS MAP WERE OBTAINED FROM THE SITE PLAN AND FROM A ROADWAY TOPOGRAPHY PERFORMED BY MCABEE & ASSOCIATES.



**McAbee & Associates, PA**  
 Professional Land Surveyors

Wallace S. McAbee, PLS Telephone (828) 628-1295  
 Eric S. McAbee, PLS Fax (828) 628-1294

3 McAbee Trail Fairview North Carolina, 28730



LOT # 111

POPLAR RIDGE SUBDIVISION

PIN: 9666-18-40-6336 LIMESTONE TOWNSHIP  
 DB 3913 PG 629 BUNCOMBE COUNTY,  
 PB 102 PG 90 NORTH CAROLINA

DATE: 7/20/07  
 PROJECT NO.: 10184  
 DRAWN BY: VKW  
 DRAWING NO.: A-07-612  
 SCALE: 1" = 60'