

NOTES:

THIS PROPERTY IS NOT LOCATED IN A SPECIAL FLOOD HAZARD AREA AS DETERMINED BY FEDERAL EMERGENCY MANAGEMENT AGENCY.
 FIRM FLOOD INSURANCE RATE MAP NO. 37021C0350 C EFFECTIVE DATE: MAY 6, 1996

PROPERTY SUBJECT TO ALL RIGHTS-OF-WAY AND EASEMENTS OF RECORD, INCLUDING, BUT NOT LIMITED TO, THOSE SHOWN HEREON.

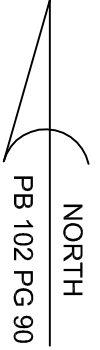
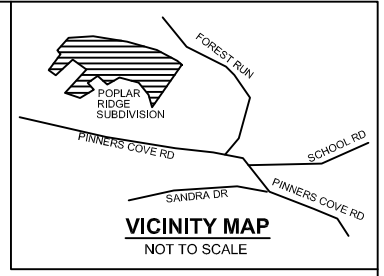
AREA BY COORDINATE COMPUTATIONS.

ALL DISTANCES SHOWN ARE HORIZONTAL GROUND DISTANCES UNLESS OTHERWISE NOTED.

BUILDING SETBACK REQUIREMENTS:

FRONT - 50' FROM RIGHT-OF-WAY
 SIDE - 15' REAR - 25'

CONTOUR INTERVAL = 5'



PIN: 9666-18-40-9319
 STEPHANIE E. SCHRAVEN
 DB 4025 PG 415
 PB 105 PG 193

LOT 111

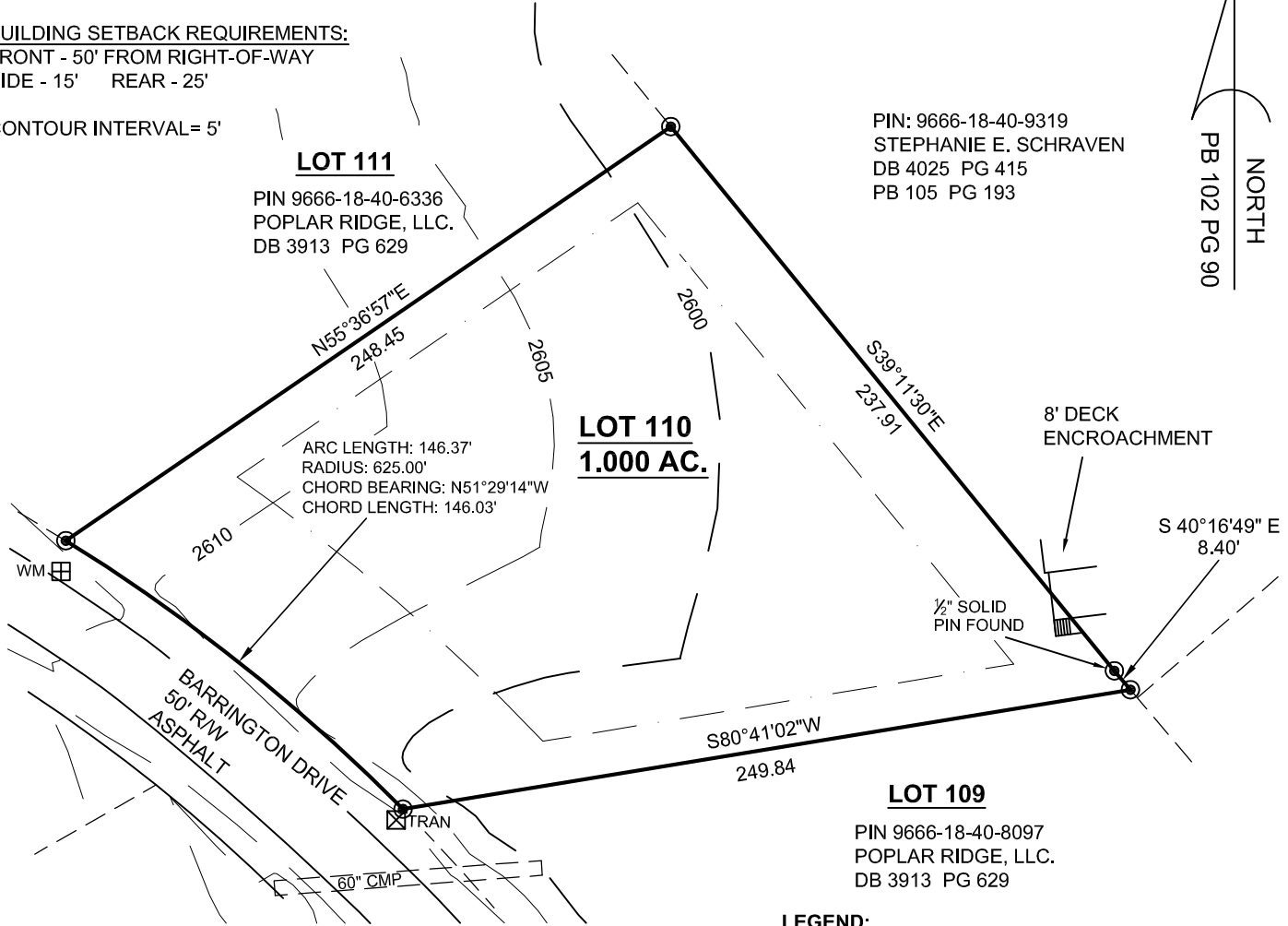
PIN 9666-18-40-6336
 POPLAR RIDGE, LLC.
 DB 3913 PG 629

**LOT 110
 1.000 AC.**

ARC LENGTH: 146.37'
 RADIUS: 625.00'
 CHORD BEARING: N51°29'14"W
 CHORD LENGTH: 146.03'

LOT 109

PIN 9666-18-40-8097
 POPLAR RIDGE, LLC.
 DB 3913 PG 629



THIS MAP TO BE USED FOR SALES PURPOSES ONLY.

THE TOPOGRAPHIC CONTOURS PRESENTED ON THIS MAP WERE OBTAINED FROM THE SITE PLAN AND FROM A ROADWAY TOPOGRAPHY PERFORMED BY MCABEE & ASSOCIATES.



LEGEND:

- PB . . PLAT BOOK
- DB. . DEED BOOK
- PG . . PAGE
- R/W . . RIGHT OF WAY
- CMP . . CORRUGATED METAL PIPE
- CALCULATED POINT (NOT SET IN FIELD)
- RECOVERED MONUMENT (#5 REBAR UNLESS OTHERWISE NOTED)
- ⊞ WM . . WATER METER
- ⊠ TRAN . . TRANSFORMER

McAbee & Associates, PA
 Professional Land Surveyors

Wallace S. McAbee, PLS Telephone (828) 628-1295
 Eric S. McAbee, PLS Fax (828) 628-1294

3 McAbee Trail Fairview North Carolina, 28730



LOT # 110

POPLAR RIDGE SUBDIVISION

PIN: 9666-18-40-7272 LIMESTONE TOWNSHIP
 DB 3913 PG 629 BUNCOMBE COUNTY,
 PB 102 PG 90 NORTH CAROLINA

DATE:: 7/20/07
 PROJECT NO.: 10184
 DRAWN BY: VKW
 DRAWING NO.: A-07-611

SCALE: 1" = 60'