

**NOTES:**

THIS PROPERTY IS NOT LOCATED IN A SPECIAL FLOOD HAZARD AREA AS DETERMINED BY FEDERAL EMERGENCY MANAGEMENT AGENCY.  
 FIRM FLOOD INSURANCE RATE MAP NO. 37021C0350 C EFFECTIVE DATE: MAY 6, 1996

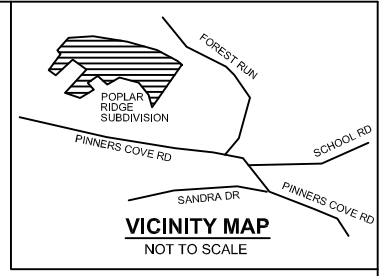
PROPERTY SUBJECT TO ALL RIGHTS-OF-WAY AND EASEMENTS OF RECORD, INCLUDING, BUT NOT LIMITED TO, THOSE SHOWN HEREON.

AREA BY COORDINATE COMPUTATIONS.

ALL DISTANCES SHOWN ARE HORIZONTAL GROUND DISTANCES UNLESS OTHERWISE NOTED.

**BUILDING SETBACK REQUIREMENTS:**  
 FRONT - 50' FROM RIGHT-OF-WAY  
 SIDE - 15' REAR - 25'

CONTOUR INTERVAL = 5'



NORTH  
PB 92 PG 31

**FUTURE DEVELOPMENT**

PIN: 9666-18-31-0225  
 POPLAR RIDGE LLC  
 DB 3913 PG 629  
 PB 102 PG 90

**LOT 104**

PIN: 9666-17-21-3579  
 POPLAR RIDGE, LLC.  
 DB 4013 PG 0436

**LOT 103  
1.105 AC.**

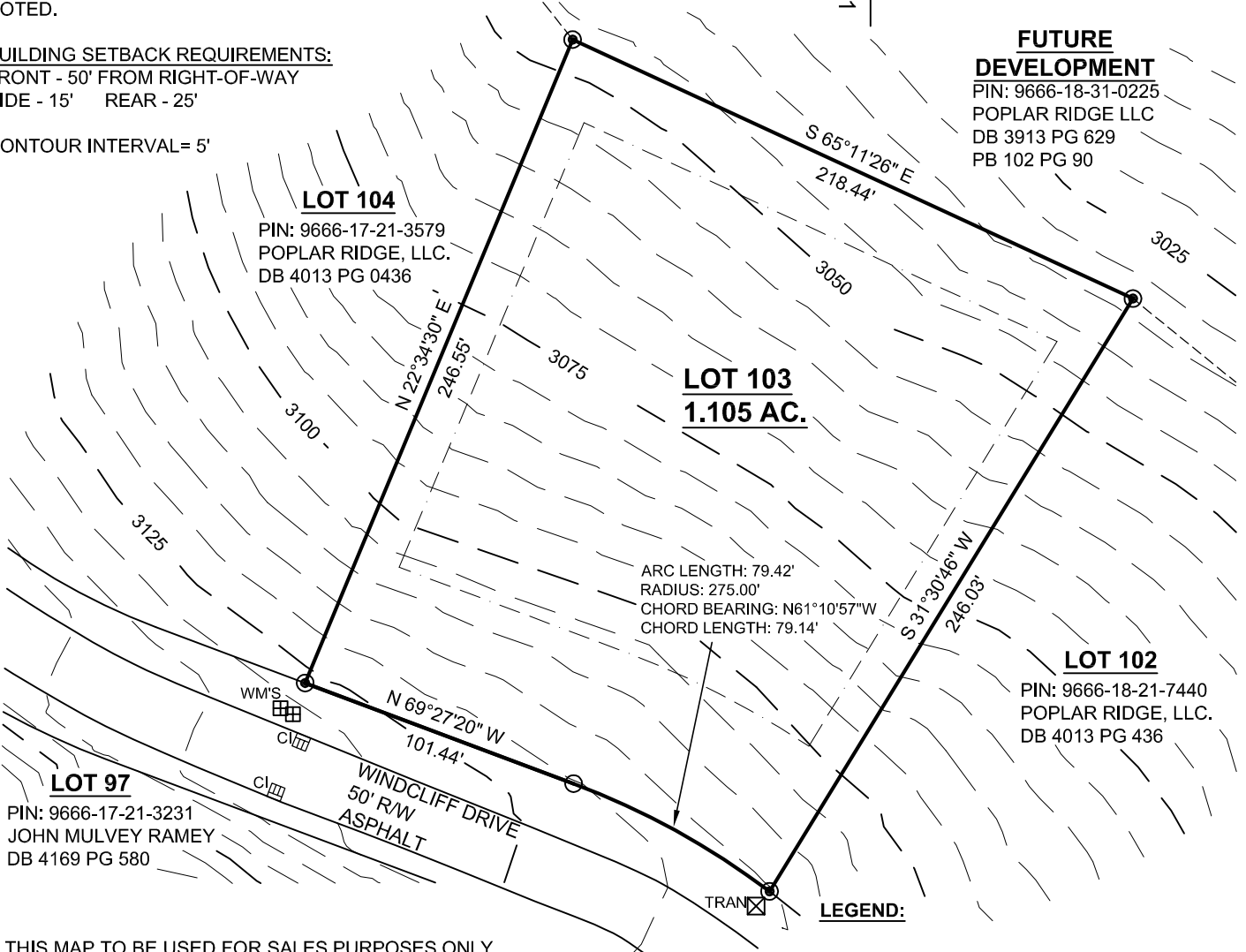
ARC LENGTH: 79.42'  
 RADIUS: 275.00'  
 CHORD BEARING: N61°10'57"W  
 CHORD LENGTH: 79.14'

**LOT 102**

PIN: 9666-18-21-7440  
 POPLAR RIDGE, LLC.  
 DB 4013 PG 436

**LOT 97**

PIN: 9666-17-21-3231  
 JOHN MULVEY RAMEY  
 DB 4169 PG 580



THIS MAP TO BE USED FOR SALES PURPOSES ONLY.

THE TOPOGRAPHIC CONTOURS PRESENTED ON THIS MAP WERE OBTAINED FROM THE SITE PLAN AND FROM A ROADWAY TOPOGRAPHY PERFORMED BY MCABEE & ASSOCIATES.



**LEGEND:**

- PB . . PLAT BOOK
- DB . . DEED BOOK
- PG . . PAGE
- R/W . . RIGHT OF WAY
- CALCULATED POINT (NOT SET IN FIELD)
- RECOVERED MONUMENT (#5 REBAR UNLESS OTHERWISE NOTED)
- ⊕ WM . . WATER METER
- ⊠ TRAN . . TRANSFORMER
- ⊞ CI . . CURB INLET

**McAbee & Associates, PA**  
 Professional Land Surveyors

Wallace S. McAbee, PLS Telephone (828) 628-1295  
 Eric S. McAbee, PLS Fax (828) 628-1294

3 McAbee Trail Fairview North Carolina, 28730

**LOT # 103**

POPLAR RIDGE SUBDIVISION

PIN: 9666-18-21-5552  
 DB 4013 PG 436  
 PB 92 PG 31

LIMESTONE TOWNSHIP  
 BUNCOMBE COUNTY,  
 NORTH CAROLINA

DATE: 7/23/07  
 PROJECT NO.: 10184  
 DRAWN BY: ADH  
 DRAWING NO.: A-07-673

SCALE: 1" = 60'