

**NOTES:**

THIS PROPERTY IS NOT LOCATED IN A SPECIAL FLOOD HAZARD AREA AS DETERMINED BY FEDERAL EMERGENCY MANAGEMENT AGENCY.  
 FIRM FLOOD INSURANCE RATE MAP NO. 37021C0350 C EFFECTIVE DATE: MAY 6, 1996

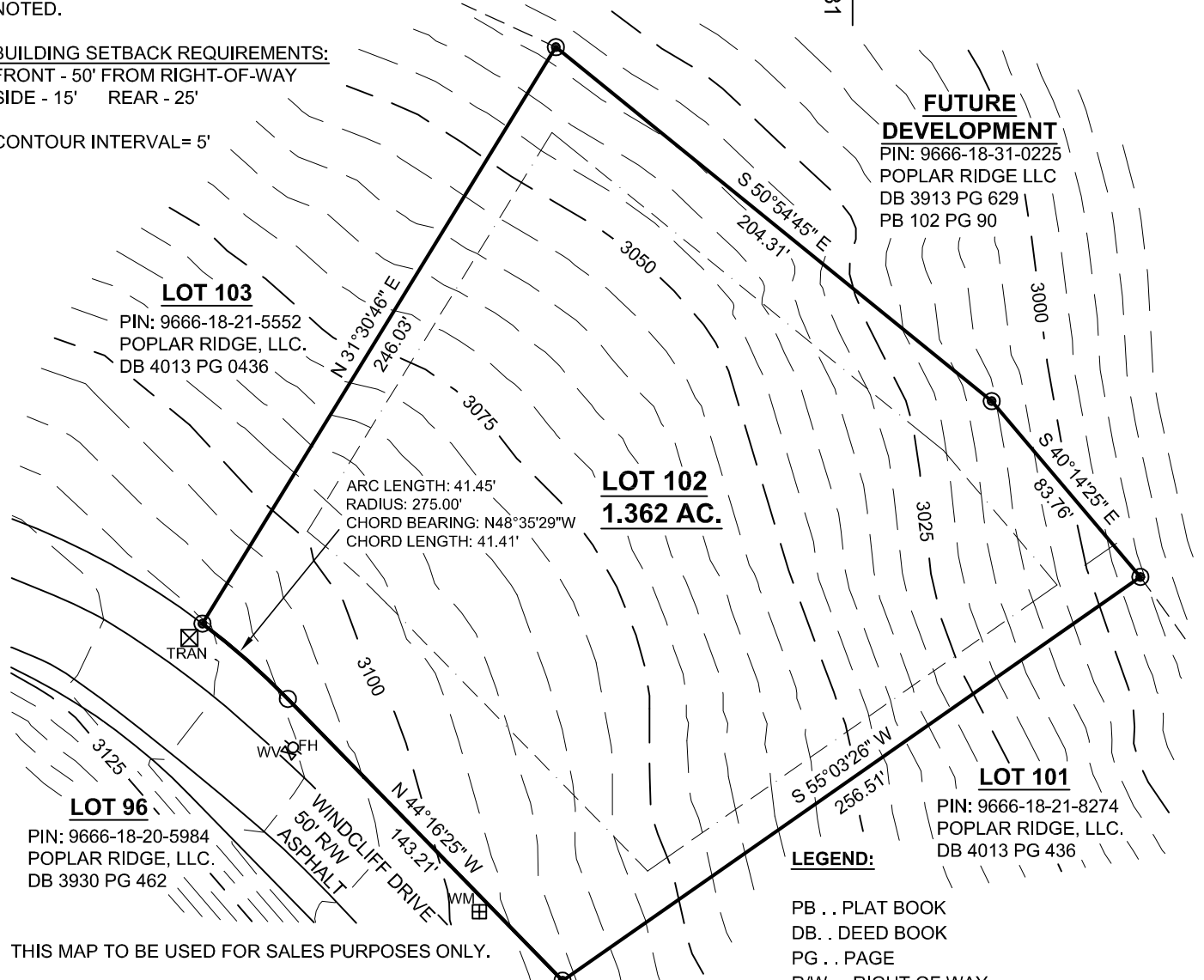
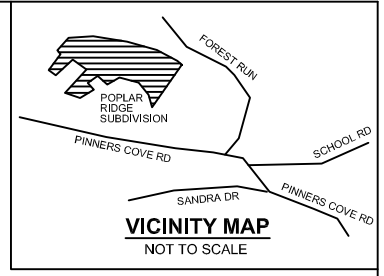
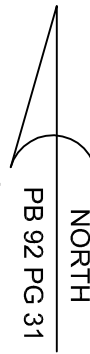
PROPERTY SUBJECT TO ALL RIGHTS-OF-WAY AND EASEMENTS OF RECORD, INCLUDING, BUT NOT LIMITED TO, THOSE SHOWN HEREON.

AREA BY COORDINATE COMPUTATIONS.

ALL DISTANCES SHOWN ARE HORIZONTAL GROUND DISTANCES UNLESS OTHERWISE NOTED.

**BUILDING SETBACK REQUIREMENTS:**  
 FRONT - 50' FROM RIGHT-OF-WAY  
 SIDE - 15' REAR - 25'

CONTOUR INTERVAL = 5'



**FUTURE DEVELOPMENT**  
 PIN: 9666-18-31-0225  
 POPLAR RIDGE LLC  
 DB 3913 PG 629  
 PB 102 PG 90

**LOT 103**  
 PIN: 9666-18-21-5552  
 POPLAR RIDGE, LLC.  
 DB 4013 PG 0436

**LOT 102**  
**1.362 AC.**

**LOT 101**  
 PIN: 9666-18-21-8274  
 POPLAR RIDGE, LLC.  
 DB 4013 PG 436

**LOT 96**  
 PIN: 9666-18-20-5984  
 POPLAR RIDGE, LLC.  
 DB 3930 PG 462

ARC LENGTH: 41.45'  
 RADIUS: 275.00'  
 CHORD BEARING: N48°35'29"W  
 CHORD LENGTH: 41.41'

**LEGEND:**

- PB . . PLAT BOOK
- DB . . DEED BOOK
- PG . . PAGE
- R/W . . RIGHT OF WAY
- CALCULATED POINT (NOT SET IN FIELD)
- RECOVERED MONUMENT (#5 REBAR UNLESS OTHERWISE NOTED)
- ⊞ WM . . WATER METER
- ⊞ WV . . WATER VALVE
- FH . . FIRE HYDRANT
- ⊞ TRAN . . TRANSFORMER

THIS MAP TO BE USED FOR SALES PURPOSES ONLY.

THE TOPOGRAPHIC CONTOURS PRESENTED ON THIS MAP WERE OBTAINED FROM THE SITE PLAN AND FROM A ROADWAY TOPOGRAPHY PERFORMED BY MCABEE & ASSOCIATES.



**McAbee & Associates, PA**  
 Professional Land Surveyors

Wallace S. McAbee, PLS Telephone (828) 628-1295  
 Eric S. McAbee, PLS Fax (828) 628-1294

3 McAbee Trail Fairview North Carolina, 28730

**LOT # 102**

POPLAR RIDGE SUBDIVISION

PIN: 9666-18-21-7440 LIMESTONE TOWNSHIP  
 DB 4013 PG 436 BUNCOMBE COUNTY,  
 PB 92 PG 31 NORTH CAROLINA

DATE: 7/23/07  
 PROJECT NO.: 10184  
 DRAWN BY: ADH  
 DRAWING NO.: A-07-672  
 SCALE: 1" = 60'