

NOTES:

THIS PROPERTY IS NOT LOCATED IN A SPECIAL FLOOD HAZARD AREA AS DETERMINED BY FEDERAL EMERGENCY MANAGEMENT AGENCY. FIRM FLOOD INSURANCE RATE MAP NO. 37021C0350 C EFFECTIVE DATE: MAY 6, 1996

PROPERTY SUBJECT TO ALL RIGHTS-OF-WAY AND EASEMENTS OF RECORD, INCLUDING, BUT NOT LIMITED TO, THOSE SHOWN HEREON.

AREA BY COORDINATE COMPUTATIONS.

ALL DISTANCES SHOWN ARE HORIZONTAL GROUND DISTANCES UNLESS OTHERWISE NOTED.

BUILDING SETBACK REQUIREMENTS:

FRONT - 50' FROM RIGHT-OF-WAY
SIDE - 15' REAR - 25'

CONTOUR INTERVAL = 5'

PIN: 966618205984
JAMES L CASE REVOCABLE TRUST & JAMES L. CASE
DB 3930 PG 462
PB 92 PG 31

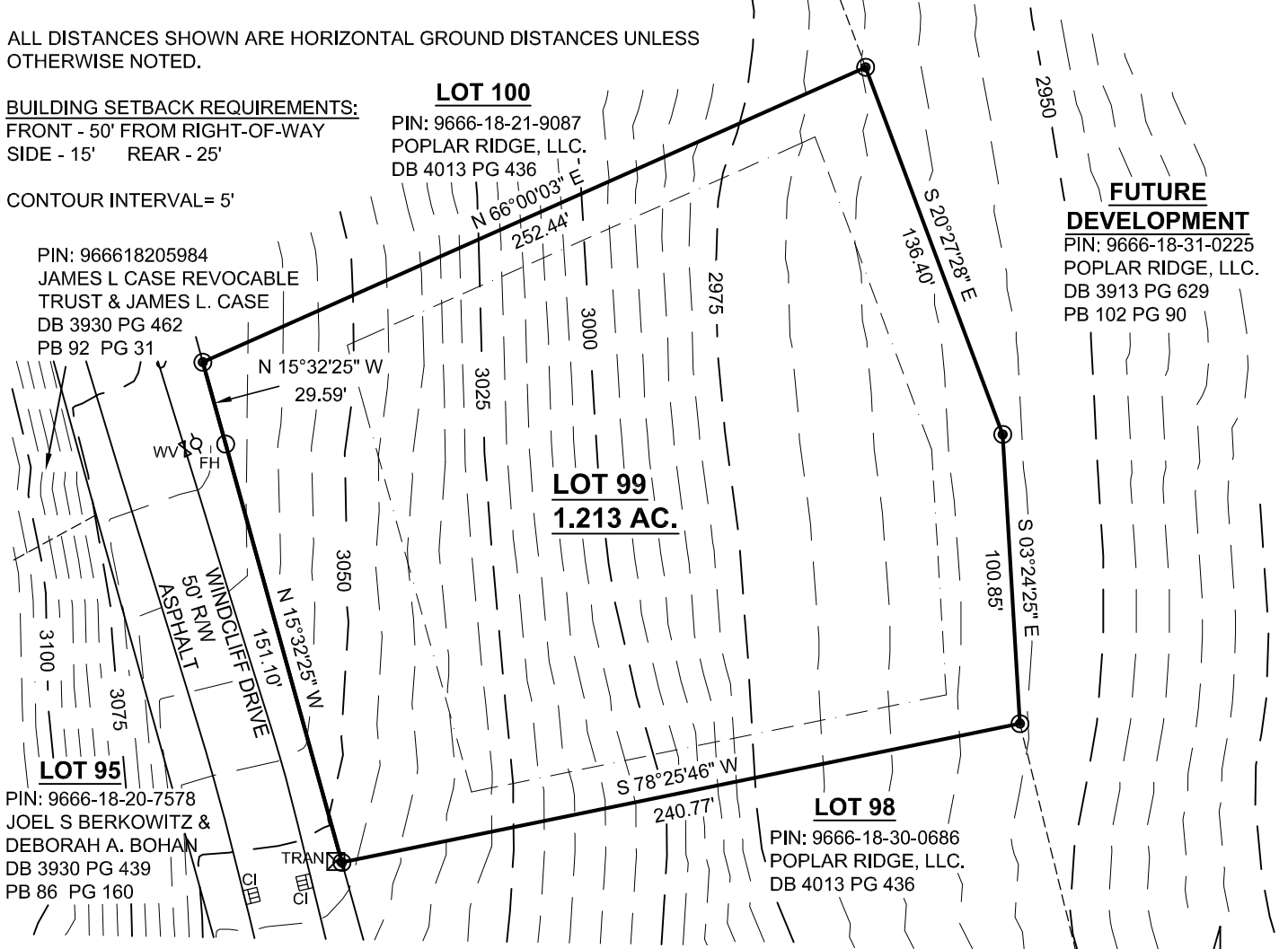
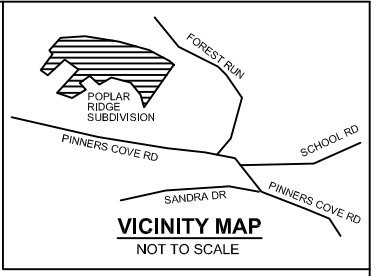
LOT 100
PIN: 9666-18-21-9087
POPLAR RIDGE, LLC.
DB 4013 PG 436

FUTURE DEVELOPMENT
PIN: 9666-18-31-0225
POPLAR RIDGE, LLC.
DB 3913 PG 629
PB 102 PG 90

LOT 95
PIN: 9666-18-20-7578
JOEL S BERKOWITZ & DEBORAH A. BOHAN
DB 3930 PG 439
PB 86 PG 160

LOT 99
1.213 AC.

LOT 98
PIN: 9666-18-30-0686
POPLAR RIDGE, LLC.
DB 4013 PG 436

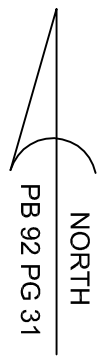


LEGEND:

- PB . . PLAT BOOK
- DB . . DEED BOOK
- PG . . PAGE
- R/W . . RIGHT OF WAY
- CALCULATED POINT (NOT SET IN FIELD)
- RECOVERED MONUMENT (#5 REBAR UNLESS OTHERWISE NOTED)
- FH . . FIRE HYDRANT
- ⊠ TRAN . . TRANSFORMER
- ▣ CI . . CURB INLET

THIS MAP TO BE USED FOR SALES PURPOSES ONLY.

THE TOPOGRAPHIC CONTOURS PRESENTED ON THIS MAP WERE OBTAINED FROM THE SITE PLAN AND FROM A ROADWAY TOPOGRAPHY PERFORMED BY MCABEE & ASSOCIATES.



McAbee & Associates, PA
Professional Land Surveyors

Wallace S. McAbee, PLS Telephone (828) 628-1295
Eric S. McAbee, PLS Fax (828) 628-1294

3 McAbee Trail Fairview North Carolina, 28730

LOT # 99

POPLAR RIDGE SUBDIVISION

PIN: 9666-18-30-0847 LIMESTONE TOWNSHIP
DB 4013 PG 436 BUNCOMBE COUNTY,
PB 92 PG 31 NORTH CAROLINA

DATE: 7/24/07
PROJECT NO.: 10184
DRAWN BY: ADH
DRAWING NO.: A-07-677
SCALE: 1" = 60'