

NOTES:

THIS PROPERTY IS NOT LOCATED IN A SPECIAL FLOOD HAZARD AREA AS DETERMINED BY FEDERAL EMERGENCY MANAGEMENT AGENCY. FIRM FLOOD INSURANCE RATE MAP NO. 37021C0350 C EFFECTIVE DATE: MAY 6, 1996

PROPERTY SUBJECT TO ALL RIGHTS-OF-WAY AND EASEMENTS OF RECORD, INCLUDING, BUT NOT LIMITED TO, THOSE SHOWN HEREON.

AREA BY COORDINATE COMPUTATIONS.

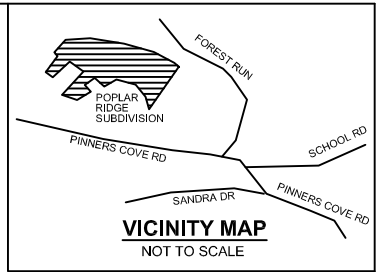
ALL DISTANCES SHOWN ARE HORIZONTAL GROUND DISTANCES UNLESS OTHERWISE NOTED.

BUILDING SETBACK REQUIREMENTS:
 FRONT - 50' FROM RIGHT-OF-WAY
 SIDE - 15' REAR - 25'

CONTOUR INTERVAL = 5'

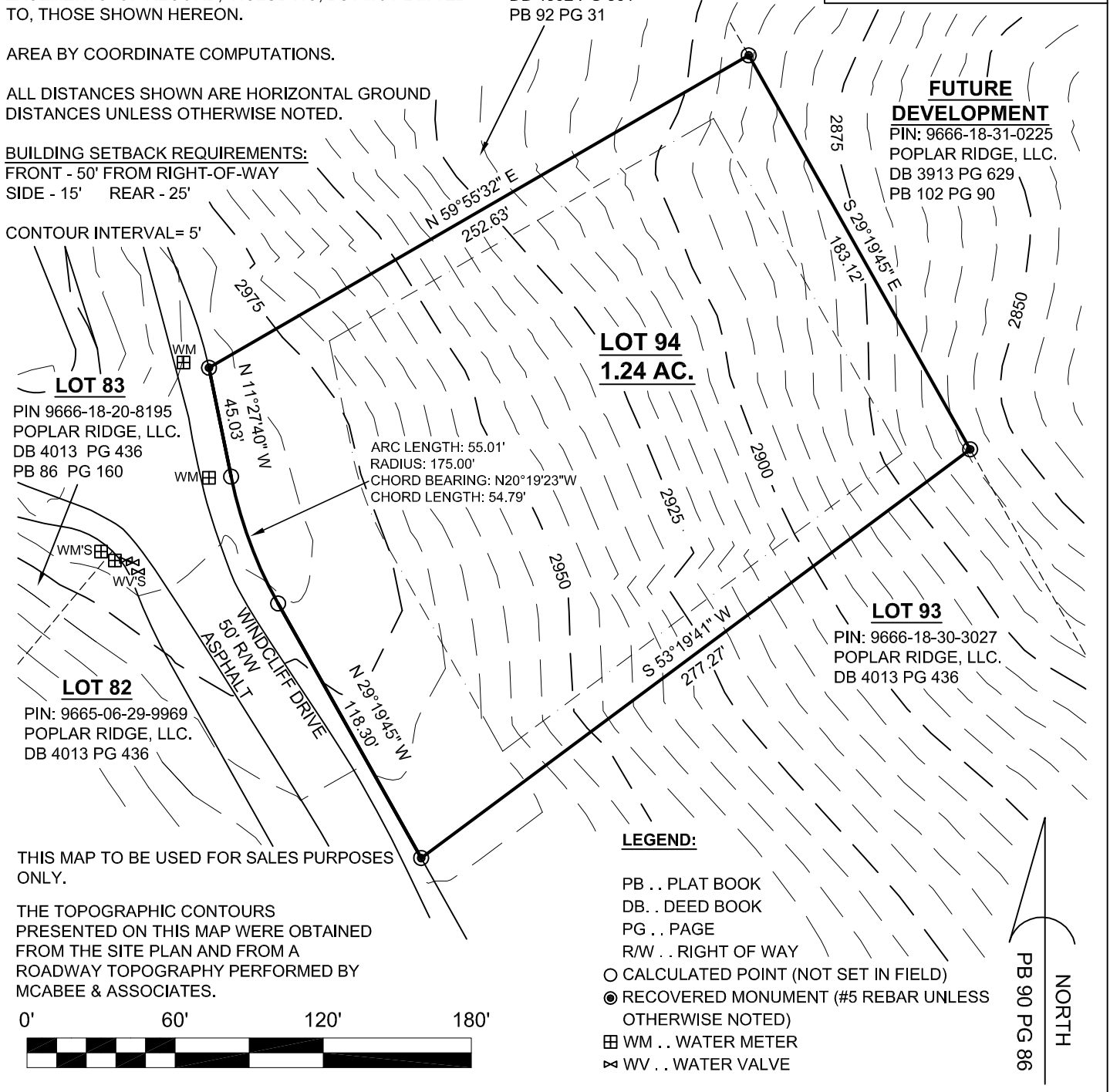
SCENIC OVERLOOK

PIN: 9666-18-30-1443
 POPLAR RIDGE HOMEOWNERS ASSOCIATION, INC.
 DB 4392 PG 361
 PB 92 PG 31



FUTURE DEVELOPMENT

PIN: 9666-18-31-0225
 POPLAR RIDGE, LLC.
 DB 3913 PG 629
 PB 102 PG 90



LOT 94
1.24 AC.

LOT 93

PIN: 9666-18-30-3027
 POPLAR RIDGE, LLC.
 DB 4013 PG 436

LOT 83

PIN 9666-18-20-8195
 POPLAR RIDGE, LLC.
 DB 4013 PG 436
 PB 86 PG 160

LOT 82

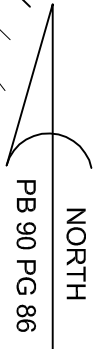
PIN: 9665-06-29-9969
 POPLAR RIDGE, LLC.
 DB 4013 PG 436

LEGEND:

- PB . . PLAT BOOK
- DB . . DEED BOOK
- PG . . PAGE
- R/W . . RIGHT OF WAY
- CALCULATED POINT (NOT SET IN FIELD)
- RECOVERED MONUMENT (#5 REBAR UNLESS OTHERWISE NOTED)
- ⊞ WM . . WATER METER
- ⊞ WV . . WATER VALVE

THIS MAP TO BE USED FOR SALES PURPOSES ONLY.

THE TOPOGRAPHIC CONTOURS PRESENTED ON THIS MAP WERE OBTAINED FROM THE SITE PLAN AND FROM A ROADWAY TOPOGRAPHY PERFORMED BY MCABEE & ASSOCIATES.



McAbee & Associates, PA
 Professional Land Surveyors

Wallace S. McAbee, PLS Telephone (828) 628-1295
 Eric S. McAbee, PLS Fax (828) 628-1294

3 McAbee Trail Fairview North Carolina, 28730

LOT # 94

POPLAR RIDGE SUBDIVISION

PIN: 9666-18-30-2224 LIMESTONE TOWNSHIP
 DB 4013 PG 436 BUNCOMBE COUNTY,
 PB 90 PG 86 NORTH CAROLINA

DATE: 7/25/07
 PROJECT NO.: 10184
 DRAWN BY: ADH
 DRAWING NO.: A-07-682

SCALE: 1" = 60'